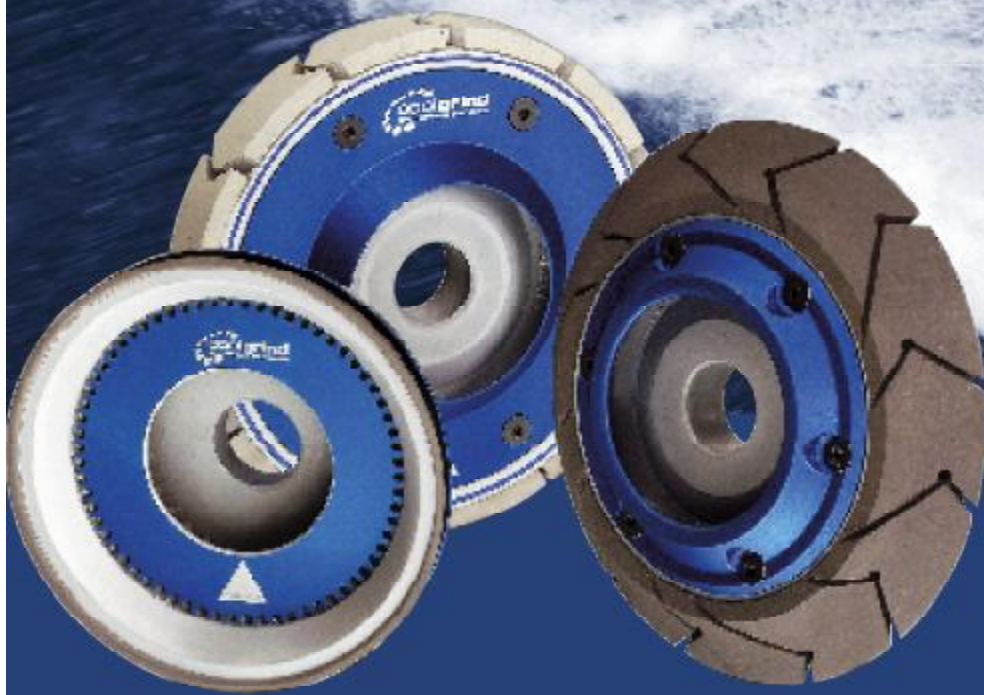


There is no cooler way to grind!



WINTERTHUR



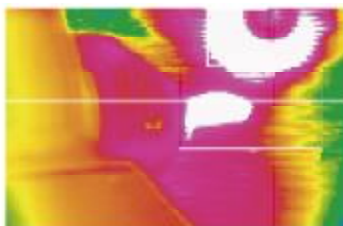
# There is no cooler way

## A cool cut delivered from the centre of the grinding wheel!

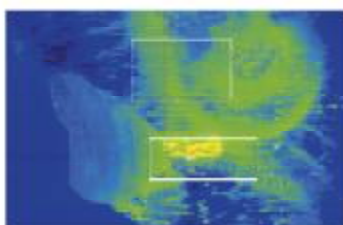
Following the development of a revolutionary inner cooling system, a full range of wheels for tool grinding is now available – giving grinding results and economic advantages previously unheard of in the manufacture and the re-sharpening of carbide and high speed steel cutting tools. After many unsuccessful trials of grinding wheels with inner cooling systems, finally a design has reached the market that is fully in line with user expectations.

The hydrodynamic design of the Coolgrind system transports the grinding fluid at the wheel's peripheral speed, precisely into the grinding zone, flooding the contact area and delivering coolant fluid and lubrication to where it is most needed. Best of all, your grinding machines will not require any modifications!

The advantages of this system can, therefore, be achieved without any additional investments. Set-up times for Coolgrind wheel sets are the same as for conventional wheel sets. Additionally, the extended tool life of Coolgrind wheels increases valuable machine time and thereby improves your bottom line.



Thermal load measured using a conventional grinding wheel.

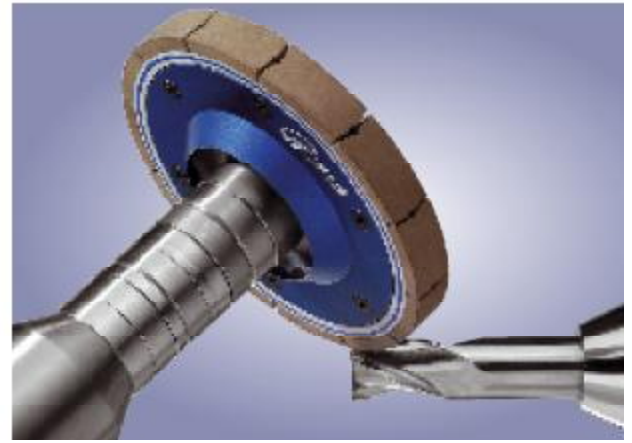


Thermal load measured using a Coolgrind wheel.

The thermal load on the workpiece, the wheel arbour and the wheel itself has been dramatically reduced. In a very "cool" way Rappold-Winterthur has removed thermal damage from the grinding scene. At the same time, cycle times have gone down and profitability up. This revolutionary concept opens up manufacturing options that have yet to be fully explored.

Given the increased process stability, unmanned shifts for the manufacture of large diameter solid carbide tools have become a reality - at greatly improved process parameters as illustrated by the case history in this brochure.

# to grind!



The heart of every Coolgrind wheel consists of a turbine located within the wheel body. The slow-wearing super-abrasive rim on the wheel body can be replaced in due course by Rappold-Winterthur, thereby further improving the overall economy of the system.

Furthermore, Rappold-Winterthur offers Coolgrind seminars to demonstrate and to teach the full practical potential of this new grinding system, showing how limits can be pushed even further than imagined.

Every Coolgrind wheel set comes with a certificate data sheet on which performance, process and Rappold-Winterthur service data are kept up-to-date.



# Case history

## Production of a large diameter solid carbide end mill.

3-flute, 30°, right hand

Diameter: 20 mm

Total length: 104 mm

Cutting length: 38 mm

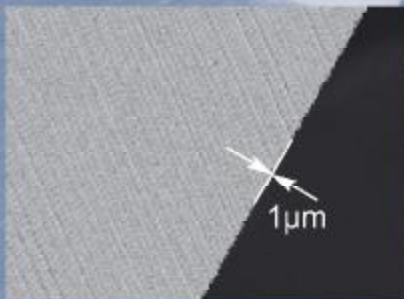
Material: TSM33 Ceratizit

Machine tool: Walter Helitronic Power Production, 24 kW spindle power

Grinding fluid: Oil, Superfin HM Petrofer, viscosity 4,75 mm<sup>2</sup>/40°C

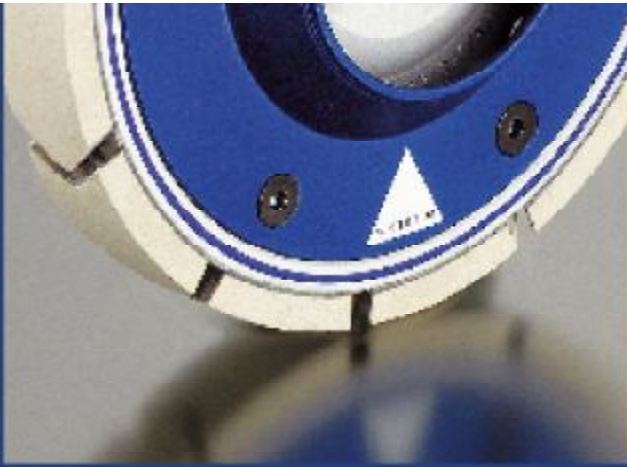
Pump capacity: 120 l/min at 6 to 20 bar

Filtration: paper filter



Operation	Type of wheel	Passes	V <sub>c</sub>	V <sub>f</sub>	a <sub>s</sub>	Q' <sub>w</sub>	
Flute grinding and back clearance	1A1 125-15-5-20 Coolgrind D 64	Roughing	1	18	135	3,7	8,3
		Finishing	1	18	180	0,3	-
Secondary relief angle (diameter)	11V9 100-10-2-20 Coolgrind D 64	1	28	180	-	-	
Primary relief angle (diameter)	11V9 100-10-2-20 Coolgrind D 64	1	28	150	-	-	
End gashing	1V1 125-15-V-45° Coolgrind D 91	1	22	80	-	-	
Secondary end relief	11V9 100-10-2-20 Coolgrind D 64	1	28	180	-	-	
Primary end relief	11V9 100-10-2-20 Coolgrind D 64	2	28	130	-	-	
Primary end relief chamfering	11V9 100-10-2-20 Coolgrind D 64	1	28	250	-	-	

**coolgrind**  
SCHROTTNER-WINTERTHUR-TECHNOLOGIE



## Austria

### **Rappold Winterthur Technologie GmbH**

St.-Magdalener Strasse 85

P.O.B. 52

A-9500 Villach

Telephone +43 (0)4242/41 811-0

Facsimile Inland +43 (0)4242/41 811-700

Facsimile Export +43 (0)4242/41 811-701

E-Mail [office@rappold-winterthur.at](mailto:office@rappold-winterthur.at)

## Switzerland

### **WST Winterthur Schleiftechnik AG**

Oberer Deutweg 4

P.O.B. 56

CH-8411 Winterthur

Telephone +41 (0)52/234 41 41

Facsimile +41 (0)52/232 51 01

E-Mail [wst@rappold-winterthur.com](mailto:wst@rappold-winterthur.com)

## USA

### **Winterthur Corporation**

70 James Street

Worcester, MA 01603

Telephone +1 508/831 79 18

Facsimile +1 508/798 27 32

E-Mail [cs@winterthurusa.com](mailto:cs@winterthurusa.com)

## United Kingdom

### **SlipNaxos Winterthur (GB) Ltd.**

2 Oakham Drive

Parkwood Industrial Estate

Sheffield, S3 9QX

Telephone +44 114 275 4211

Facsimile +44 114 275 4132

E-Mail [kaye.walker@slipnaxos-winterthur.co.uk](mailto:kaye.walker@slipnaxos-winterthur.co.uk)



## France

### **Winterthur Technologie France Sarl**

31, rue des Jardins

F-68000 Colmar

Telephone +33 (0)3 89 24 01 31

Facsimile +33 (0)3 89 24 07 26

E-Mail [france@winterthur-tech.fr](mailto:france@winterthur-tech.fr)

## Sweden

### **SlipNaxos AB**

SE-593 83 Västervik

Telephone +46 (0)490/843 00

Facsimile +46 (0)490/146 00

E-Mail [support@slipnaxos.se](mailto:support@slipnaxos.se)

## Finland

### **Rapoflex Oy**

Vitikka 1D

PL 122

SF-02631 ESP00

Telephone +358 (0)9/54 86 180

Facsimile +358 (0)9/45 56 185

E-Mail [rapoflex@kolumbus.fi](mailto:rapoflex@kolumbus.fi)

[www.rappold-winterthur.com](http://www.rappold-winterthur.com)

[www.coolgrind.com](http://www.coolgrind.com)